



Our Place

Wakefield Community Hub

he whenua ataahua

Core Values Framework

This core values framework report was developed at the workshop session on the 8th of February 2024. This report serves 3 purposes:

- 1) It outlines who we are as a Trust and what we stand for in the community.
- 2) It serves as a roadmap for behaviour and helps guide our actions to align with what's most important to the Trusts goals.
- 3) Provides a basis with content creation for external communications



Our Place
Wakefield Community Hub
he whenua ataahua



Core Values Framework

This core values framework report was developed at the workshop session on the 8th of February 2024. This report serves 3 purposes:

- 1) It outlines who we are as a Trust and what we stand for in the community.
- 2) It serves as a roadmap for behaviour and helps guide our actions to align with what's most important to the Trusts goals.
- 3) Provides a basis with content creation for external communications

Who are we?

We are the Waimea South Community Facility Charitable Trust. Yeah, we know it's a mouthful but we're more than "just a trust"—we are your community, amplified!



We're a vibrant network of passionate individuals brought together by a deep-seated love for our incredible community.

Many of us have been a part of our community for many years, raising our children, working in the community, etching our stories into its very fabric. Now, we're joining forces to ensure its future shines just as bright.

Why are we here?

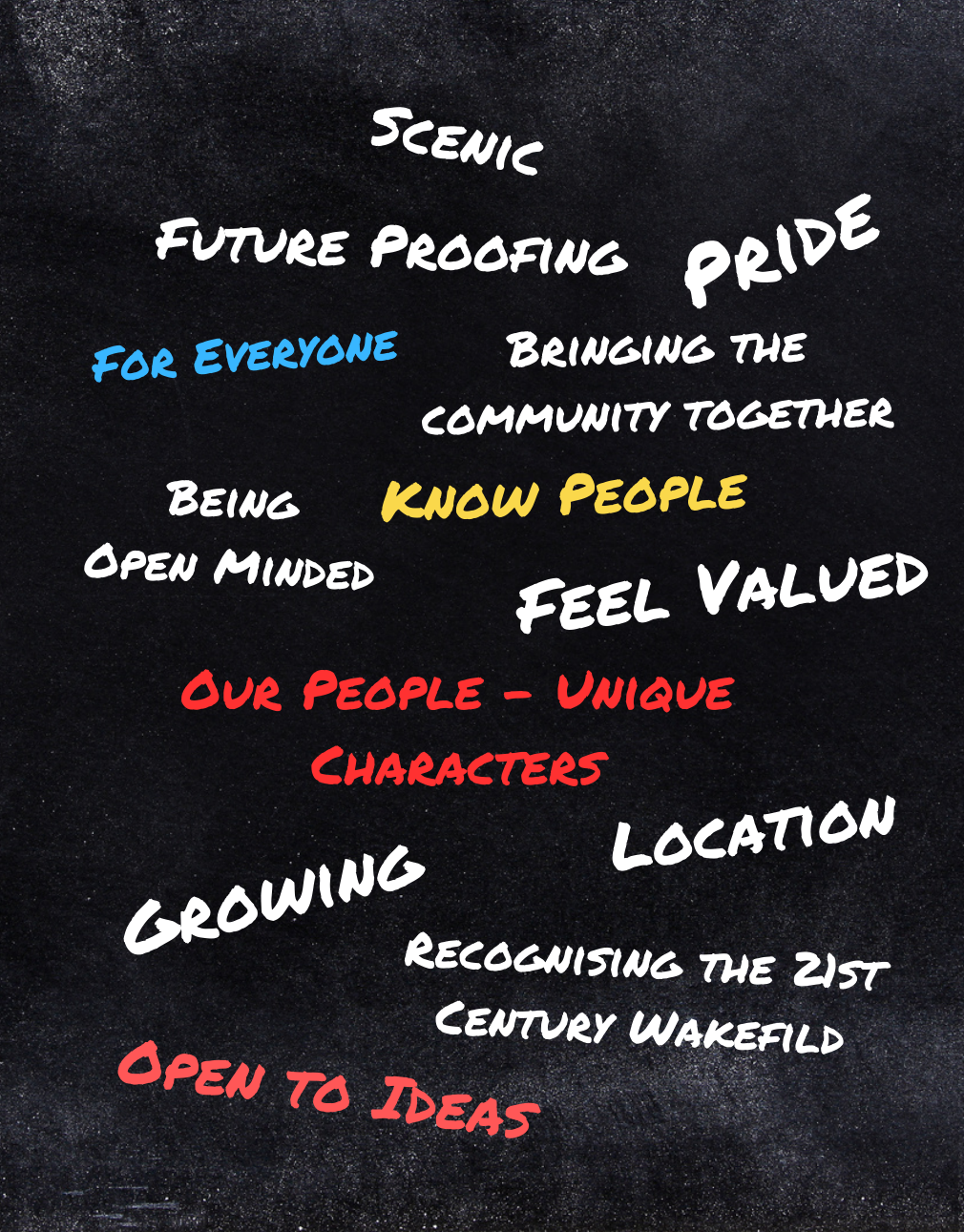
Because we believe in the power of community. We believe in fostering connections, supporting initiatives that make a difference, and creating a space where everyone feels welcome, valued, and empowered.



Contents

- 1 What do we stand for?**
Building a Brighter Future on the Foundations of Our Community
- 2 What do we do?**
Building a Better Tomorrow, Together
- 3 How do we act?**
Building a Community Where Everyone Belongs
- 4 Future focus?**
Unlocking Our Community's Potential





1 What do we stand for...

Turangawaewae

Turangawaewae, meaning "standing place" in Te Reo Māori, refers to a sense of belonging and foundation within a community. It's where you feel empowered, rooted, and connected. In a community context, tūrangawaewae can be fostered through shared experiences, cultural understanding, and creating spaces for everyone to have a voice.



Natural Environment

A healthy environment is a healthy community. We want to work with our community to protect our green spaces, clean water, and native wildlife. By respecting nature, we create a vibrant place for people and wildlife to thrive



Open to Possibility

We are a Trust that embraces new ideas and explores the horizon together with our community. Together, we unlock potential and turn possibilities into realities. Here, all voices are heard, and all dreams are welcome.

Identity & History

A community's identity is a tapestry woven from its shared history. It's the triumphs and struggles, traditions and stories passed down, that shape who they are. This identity binds us together, offering a sense of belonging and grounding in the present.

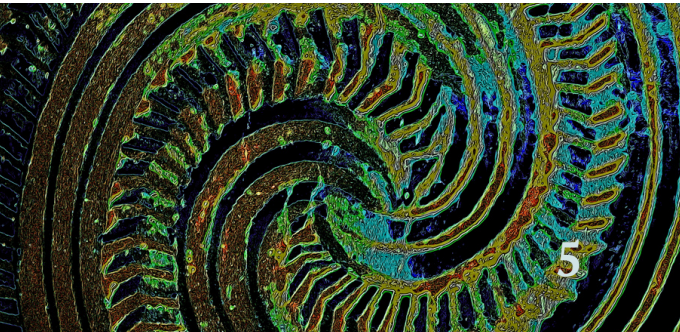


Sense of Belonging

Familiar faces, friendly connections: Knowing people in our community creates a sense of belonging and makes it a warmer, more welcoming place.

Kotahitanga

Kotahitanga, meaning unity in Te Reo Māori, is a powerful concept in fostering strong communities. It emphasizes working together, like one whānau (extended family), to achieve shared goals. This involves supporting each other, collaborating on solutions, and working towards the collective good. By embracing kotahitanga, communities can create a more inclusive and resilient environment for everyone



A place to
grow

Tūrangawaewae, our "standing place" in Te Reo Māori, represents our deep sense of belonging and connection within our community. It's where we feel empowered, rooted, and supported. We nurture this tūrangawaewae by sharing experiences, embracing cultural understanding, and creating spaces where everyone's voice is heard.

Our identity is woven from the threads of our shared history. Triumphs and struggles, traditions and stories passed down, all shape who we are. They bind us together, offering a sense of belonging and grounding in the present.

We are a community that embraces new ideas and explores the horizon together. We unlock potential and turn possibilities into realities, where all voices are heard, and all dreams are welcome.

BUILDING A BRIGHTER FUTURE ON THE FOUNDATIONS OF OUR COMMUNITY

Kotahitanga, meaning unity, is the cornerstone of a strong community. We strive to work together, like one whānau (extended family), towards shared goals. This involves supporting each other, collaborating on solutions, and working for the collective good. By embracing Kotahitanga, we build a more inclusive and resilient community for everyone.

Our environment is a taonga (treasure). It is the foundation for a healthy community. We work together to protect our green spaces, clean water, and native wildlife. By respecting and protecting nature, we create a vibrant place where people and wildlife can thrive for generations to come.

A place to
connect

Being Proactive

Being proactive in your community means taking initiative to make it a better place. It's about looking ahead, anticipating needs, and solving problems before they arise. Instead of just reacting to issues, you're going out and making positive change happen

Inform

Engaging with our community and keeping them informed is essential. We strive to use a variety of communication channels to reach all residents with important updates and news.

Enable

Thriving communities empower their groups and people. This means creating spaces for them to connect, share ideas, and take ownership of their experiences. By fostering participation and removing barriers, we unlock the collective potential that drives positive change.



Accountability

A strong community thrives on accountability. We all have a role to play in ensuring everyone feels supported and that our shared goals are being met. This means holding each other accountable and working together to make sure we're on the right track, not just checking boxes.

2

What do we do?

Connect

Bridging the gaps: We connect groups and people, fostering a strong and vibrant community.



Advocating

Advocating in a community is about being a voice for positive change. It's using your passion to identify and address issues that matter to your neighbors. By speaking up and working together, we can create a stronger, more responsive community for everyone.

Facilitating

Facilitating community projects is about empowering people to work together. It's about guiding discussions, fostering collaboration, and ensuring everyone's voice is heard to bring a project from idea to reality for the benefit of the community.

LEAD

TRANSPARENT

PLANNED

ENCOURAGE

GIVE PEOPLE THE OPPORTUNITY
TO BE PART OF IT

ACHIEVE OUTCOMES

WE SELL THE PROJECT -
GET PEOPLE EXCITED





We want to anticipate our community's needs, connect our people, and empower them to thrive. This is what proactive community engagement looks like. Through clear and accessible communication, we ensure everyone is informed and feels included.



We create spaces for residents to connect, share ideas, and take ownership of their experiences. By removing barriers and fostering participation, we unlock the power of collective action. We hold each other accountable: We all play a role in building a strong community. We work together, ensuring we're on the right track to make positive change, not just going through the motions.



BUILDING A BETTER TOMORROW, TOGETHER

We advocate for change: Passionate residents become a force for good, identifying and addressing issues that matter. By speaking up together, we create a more responsive and inclusive community.



We guide discussions, foster collaboration, and empower residents to turn ideas into reality, building a better tomorrow for everyone.

A place to
empower



A place to
inspire

3 How we act...



We strive to create a welcoming and inclusive space where everyone feels comfortable to participate. Our tone is friendly and approachable, and our look and feel is bright and energetic, warm and inviting, professional and trustworthy.

How we act....

We believe in fostering a community that is polite, kind, and respectful. We are generous with our time, resources, and support, and we always strive to create a welcoming environment where everyone feels valued and included.



UNFAILINGLY POSITIVE
"HOW CAN I HELP?" BE
SERVANTS TO OUR **PUNCHY**
PEOPLE.
CURIOUS **RESPECTFUL**
ENCOURAGING MEDIATE DIVERSE
POINTS OF VIEW
WELCOMING
KIND **POSITIVE**
DOERS
GENEROUS **DIRECT**
KNOWLEDGEABLE

Knowledgeable & direct....

Our community thrives on shared knowledge. We bring expertise to the table, allowing us to tackle issues head-on with direct solutions

A place to
trust

Building a community where everyone belongs

Kindness is our foundation.
We treat each other with respect, creating a welcoming
environment where everyone feels valued.
Together, we know more.

By sharing our knowledge and resources, we tackle
problems head-on with creative solutions.
Participation is power. We create a space where
everyone feels comfortable sharing their voice.



A place to
belong

Our communication is friendly,
approachable, and professional,
reflecting the vibrant
community we are.
We are inclusive, generous, and
supportive. Our warmth and
professionalism build trust,
allowing us to work together
and create a community that
thrives.





4 A future focus...

Sustainability and Environmentally Friendly

We're passionate about protecting our environment and creating a greener future for all. By working together, we can make eco-conscious choices that benefit our community and the planet.

YOUNG + OLD
IT'S OUR PLACE
KNOW OUR PEOPLE
SUSTAINABILITY
OPEN-MINDED
BUILD ON THE PAST TO
SECURE THE FUTURE
ENVIRONMENTALLY
FRIENDLY
IT'S OUR TURN

Future focus on equality and engagement

Our Trust is dedicated to fostering a future of equity and engagement. This means ensuring everyone has a voice and a chance to thrive. We'll achieve this by actively listening to diverse perspectives and creating opportunities for all community members to contribute and feel valued.

NEVER STANDING STILL -
ALWAYS MOVING FORWARD

CHALLENGE OURSELVES -
WHATS AHEAD
WHAT OPPORTUNITIES
WHAT'S POSSIBLE

Learn about the local community

We set our sights on the horizon! Together, young and old, we can explore uncharted territory. By embracing challenges as stepping stones, we'll unlock a world of possibilities for our community. The future beckons, and together we'll keep our community moving forward, stronger and more vibrant than ever.

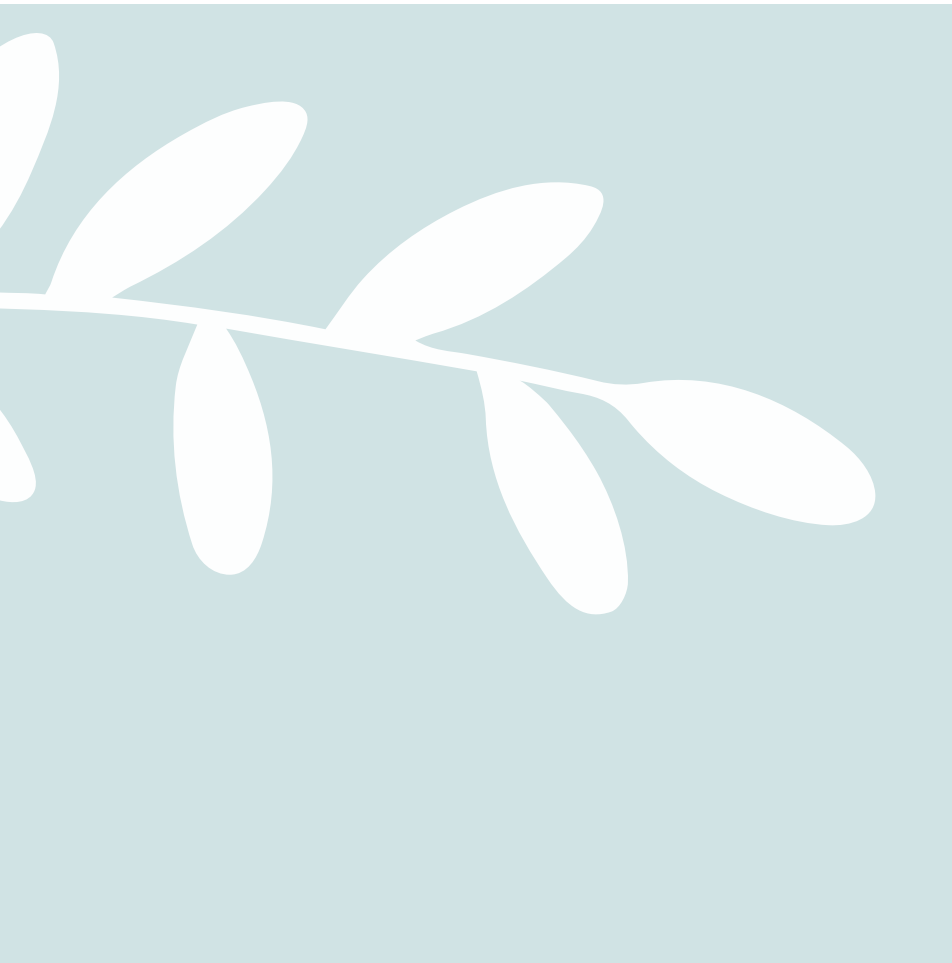


Treasure our past to secure our future

Together, we stand on the shoulders of those who came before us. By learning from our community's history, successes, and challenges, we can build a brighter future that benefits everyone. Through collaboration and shared vision, we'll secure a future where all voices are heard young & old.



UNLOCKING WAKEFIELD'S POTENTIAL



We stand on the shoulders of giants. Learning from our community's past strengthens us as we move forward, building a stronger, more vibrant future.

keeping the focus on our community. Young and old, we'll navigate uncharted waters together, turning challenges into stepping stones for boundless possibilities.



A place to
dream

Equity and engagement are our cornerstones:

We actively listen to diverse perspectives, fostering a sense of belonging and empowering all community members to contribute.



A place to
lead

A sustainable future for all.

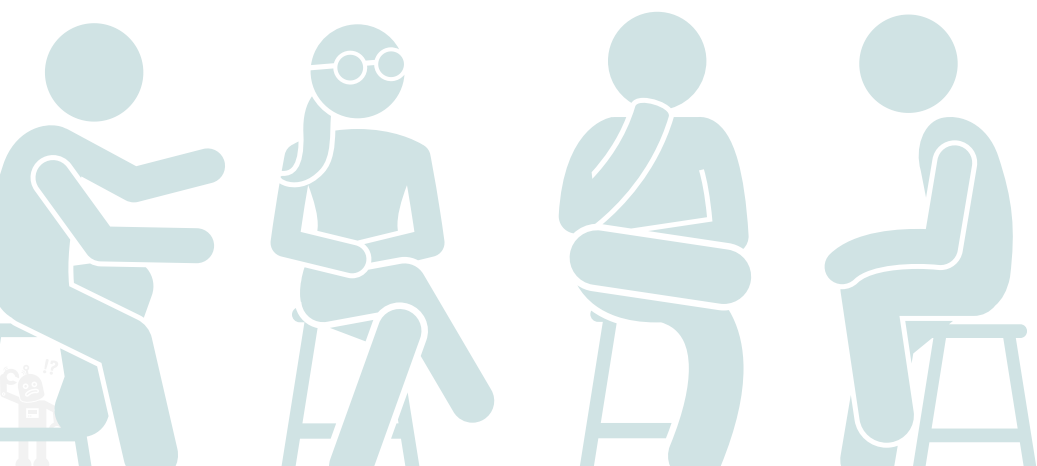
We are passionate about protecting our environment. By working together, we can make eco-conscious choices for our community and the planet.





**This is our community
This is our story
This is our chance to make a
difference.**

Together, let's build a future where
Wakefield isn't just another village but, a
vibrant symbol of unity, collaboration, and a
community that thrives for generations to
come.



Waimea South Community Facility Charitable Trust

A place to *grow*

A place to *inspire*

A place to *connect*

A place to *empower*